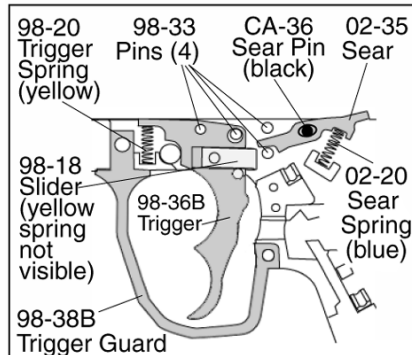
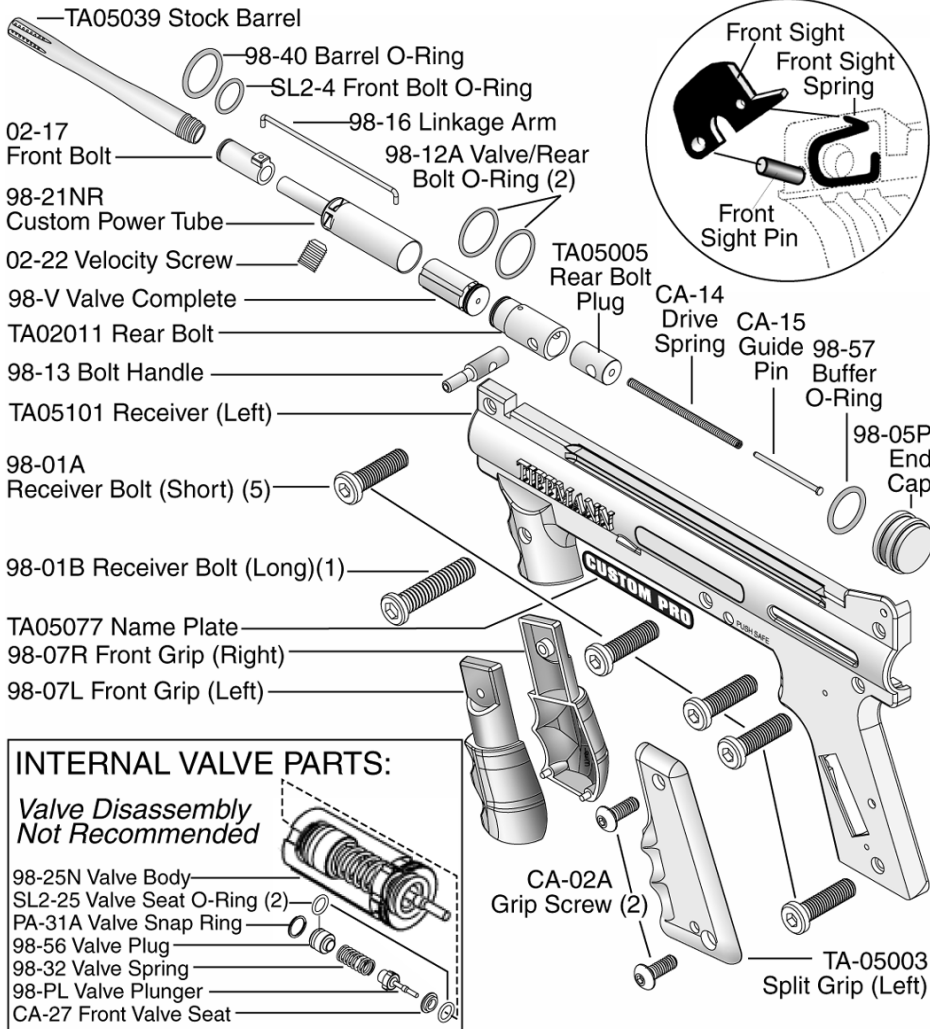


# CUSTOM PRO™ RESPONSE™ Parts List

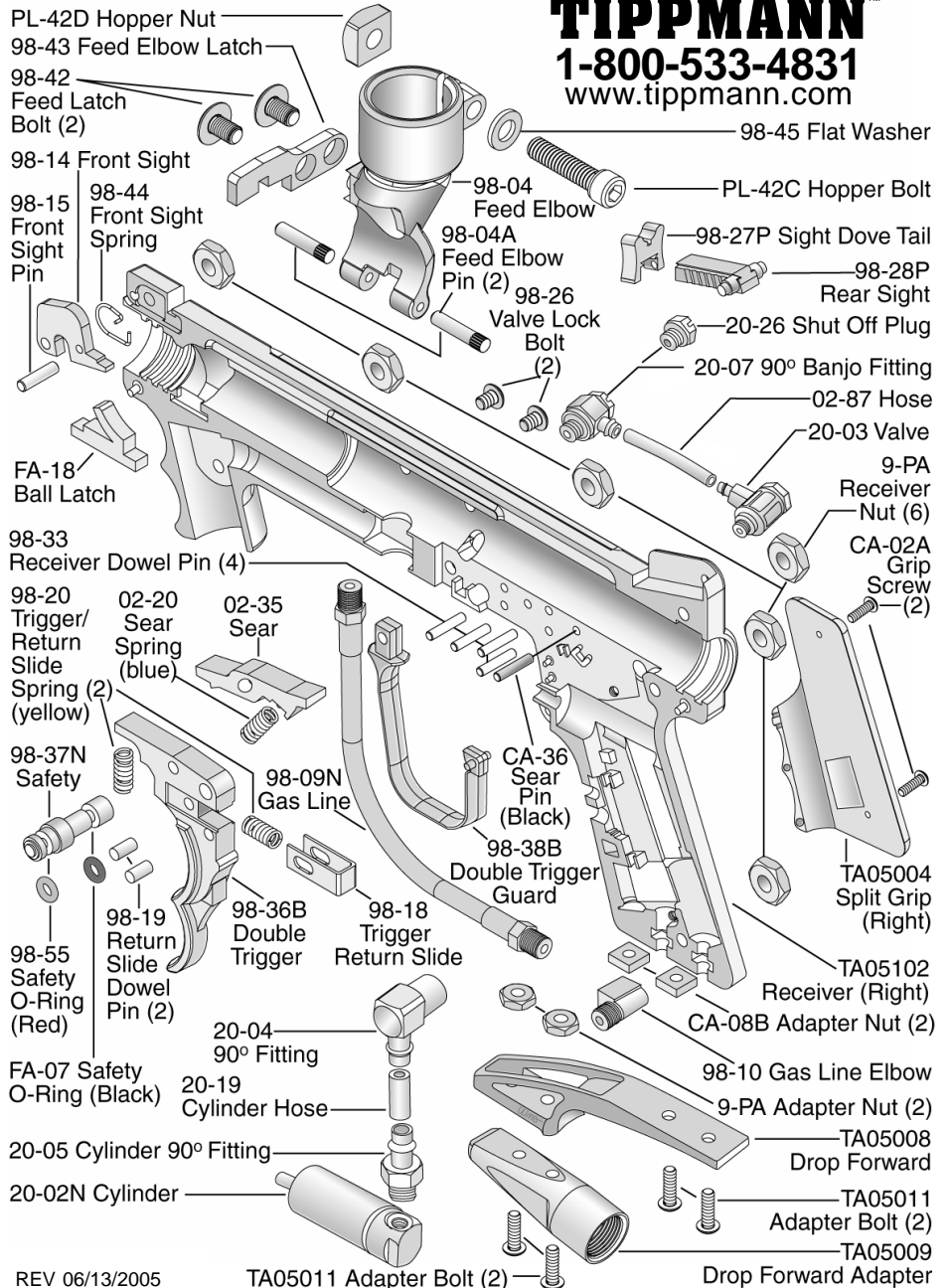


## TRIGGER ASSEMBLY

- 1) Place 4 pins and 1 black sear pin into locations as shown.
- 2) Then place the trigger and sear onto pins as shown.
- 3) Insert sear spring (blue) as shown.
- 4) Insert trigger spring (yellow) as shown.

**WARNING**  
DO NOT FIELD STRIP OR OTHERWISE DISASSEMBLE THIS MARKER WHILE IT IS PRESSURIZED WITH AIR.

**TIPPMANN™**  
1-800-533-4831  
www.tippmann.com



REV 06/13/2005

TA05011 Adapter Bolt (2)

Drop Forward Adapter